


17,133



2000 I-30 E
Greenville, TX 75402

FILED FOR RECORD
at 12:30 o'clock P M

NOV 23 2021

BECKY LANDRUM
County Clerk, Hunt County, Tex.
By 

Friday, November 5, 2021

Office of Hunt County Commissioners
PO BOX 1097
Greenville TX 75403

Farmers Electric Cooperative Member: DR Horton
Service Order Number: 2021111595

Greetings:

Farmers Electric Cooperative, Inc. is requesting permission to construct electrical power distribution facilities which will cross County Road 2458 which is located at the corner of CR 2452 & CR 2458 in Hunt County, Texas.

Site location map and construction sketches are enclosed. The construction sketch details the proposed work. All road crossings will have a minimum vertical clearance of 22 feet.

If you have any questions, please contact me at any time.

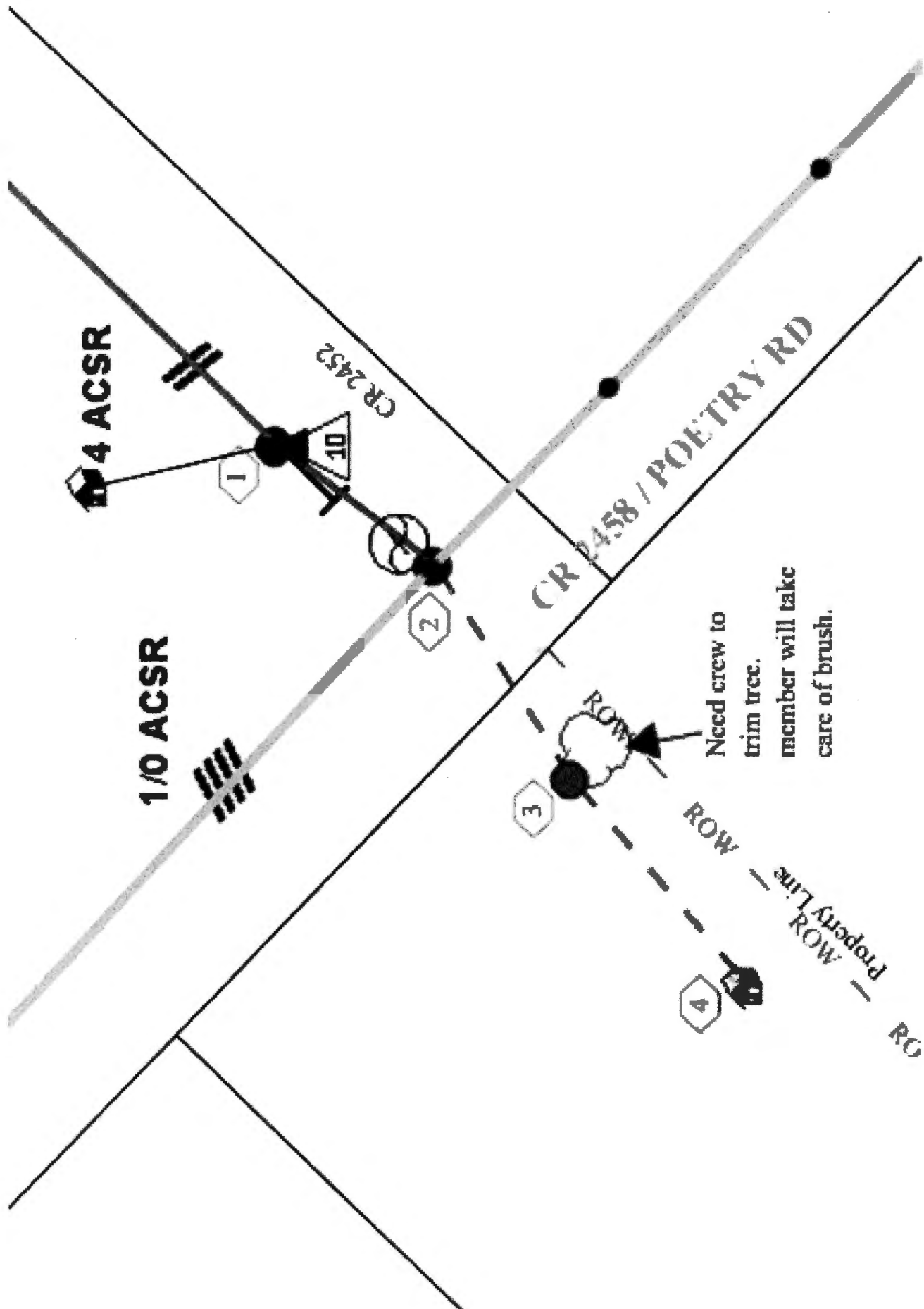
Sincerely,

Mark Simpson

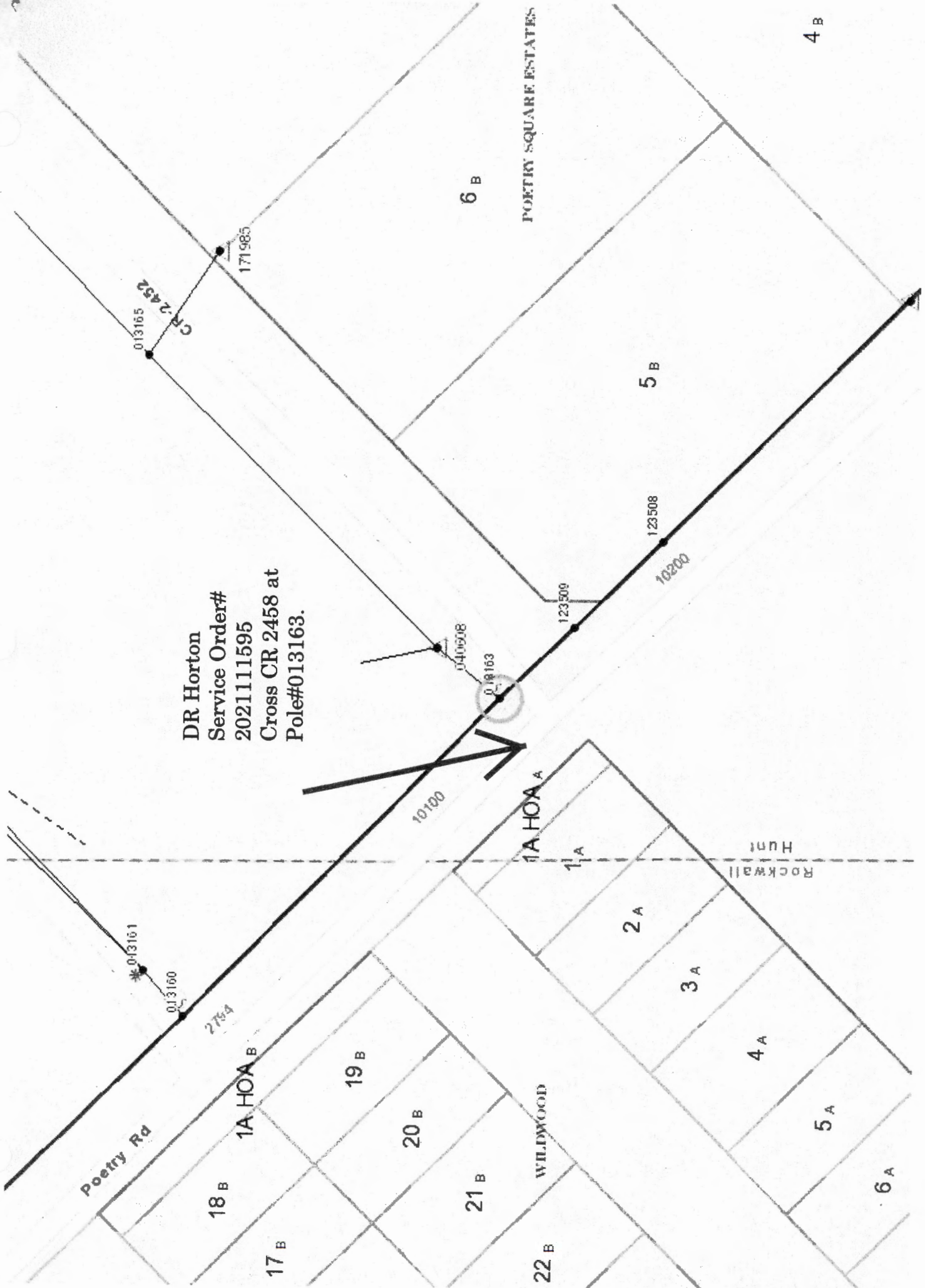
Project Coordinator
msimpson@farmerselectric.coop
Phone 903-461-2458

Submitted by Brandon Darrow
bdarrow@farmerselectric.coop
Field Engineering Coordinator

Enclosures



DR Horton
Service Order#
2021111595
Cross CR 2458 at
Pole#013163.



Poetry Ra

18 B
1A HOA B

19 B

20 B

21 B

22 B
WILDWOOD

1A HOA A

1 A

2 A

3 A

4 A

5 A

6 A

Rockwall
Hunt

6 B

5 B

4 B

POETRY SQUARE ESTATES

CR 2452

013165

171985

040608

018163

123509

123508

10200

10190

013160

2754